



# HAMURA NEWS



**HAMURIN** Hamura City Mascot

**December 15th , 2017**

Edited by: *Kouhou Kouchou-ka* (Public Information & Public Opinion Section)

Published by: *Hamura City*

5-2-1 *Midorigaoka*, Hamura City, Tokyo 〒205-8601 ☎042-555-1111

Hamura City Official Website = <http://www.city.hamura.tokyo.jp> E-mail: [s102000@city.hamura.tokyo.jp](mailto:s102000@city.hamura.tokyo.jp)

Hamura News Back Numbers = <http://www.city.hamura.tokyo.jp/category/3-17-2-0-0.html>

平成 29 年度市民提案型協働事業はむら市民ギャラリー

## < Art Gallery with Works Created by Citizens >

The Citizen's Gallery Project co-sponsored by citizens and the city is held for the promotion of cultural activities. All events are operated by local citizens.

Place: Community Center 2F Hall Feature: *Waterdrops* The Wonderful Flowers and Nature Photographs of local citizens will be on display.

Date: December 17<sup>th</sup> (Sun) ~ 24<sup>th</sup> (Sun), 2017 10AM ~ 5PM (~3PM on final day). Closed on the 18<sup>th</sup> (Mon)

Please call: ☎090-6533-0229(*Ito*) Management Committee

第 3 1 回羽村市ふれあい綱引き大会

## < THE 31<sup>st</sup> HAMURA FUREAI TSUNAHIKI Championship ~ Chairman Cup of Tokyo Tug of War Federation >

Date & Time: January 28<sup>th</sup> (Sun), Opening ceremony starts at 0:30PM, The competition starts at 1PM

Place: Sports Center, Hall 1 Eligibility: 8 people per team (Up to 10 people can be registered on one team)

Categories (and Eligibility):

- Males team of Chounai-kai, and Jichikai: Male Hamura residents, age of junior high students or older
- Males team General: Male Hamura residents, workers, or students, age of junior high students or older
- Females team: Female Hamura residents, workers, or students, age of junior high students or older
- Co-gender team: Any Hamura residents, workers, or students, age of junior high students or older
- Elementary School Students team: Male and female elementary school 4<sup>th</sup>~6<sup>th</sup> graders.

\*There is no weight restriction for team members.

\*For the co-gender competition, a team can register no more than 4 males.

\*For Elementary school students teams & junior high students teams that participate in co-gender category, there is no restriction for the number of members and gender ratio.

How to apply & Inquiries: There are application forms which should be filled out and brought to:

NPO *Houjin Hamura-shi Taiiku Kyoukai* (The Hamura Athletic Association, in the Sports Center) by January 5<sup>th</sup> (Fri), 5PM. NPO *Houjin Hamura-shi Taiiku Kyoukai* ☎042-555-1698 9AM~5PM, excluding Mondays.

\*The application form is available at the office mentioned above and on their website for download.



2018 都民芸術フェスティバル 第 48 回都民寄席 羽村公演

## < "Tomin (Citizens of Tokyo) Yosé" in Hamura >

There will be a show in Hamura City featuring traditional art called "Yosé". (in Japanese). The guests are very renowned "hanashika" artists.

Date: February 16<sup>th</sup> (Fri) 6PM~ (doors open at 5PM) Place: *Yutorogi* Main Hall no reserved seating

Capacity: first 844 Fee: Free Inquiry/Application: Please send an "oufuku hagaki" (double postcard) to the *Rakugo Kyoukai* Association indicating your group representative's: address, age, name, telephone number, and participating number of persons. (One person can send up to 2 postcards.) by the deadline. It should be written that you request February 16<sup>th</sup> (Fri) *Hamura Kouen* (performance) somewhere in the space of the sent postcard.

▶ Application post cards lacking information will become invalid if necessary details are not indicated.

▶ Preschool age children are not allowed admission.

Send to: Zip code 〒110-0005 *Tomin Yosé*

Phone Number: *Rakugo Kyoukai* ☎03-3833-8622

*Rakugo Kyoukai* Association

1-9-5 Ueno

*Taito-Ku, Tokyo*

\*NOTE\* Return postcard must have the representative's address indicated on front part.

※Deadline is January 6<sup>th</sup> (Sat) Performers: ▶ *Rakugo* by Members of *Katsura, Takigawa, Ryutei* groups

### ~The 1 Year-Old and Parent Get-Together Group ~

Date: December 26<sup>th</sup> (Tue), from 10:30AM~11:45AM (Reception starts 10AM) Place: Hoken(Health) Center  
Hamura City Residents who have a child at age 1 year old to 14 month old can attend with their child.

Place: Hoken Center Eligibility: Hamura City Residents who are raising 1 year ~ 14 month old children

This is a get-together for fun class geared toward 1 year old ~ 14 month old kids and their parents.

(First time participant only) Note: We are sorry, no older siblings can attend this class.

They will offer tips on daily life rhythm, how to stop breast feeding, how a child can play with other children, and about preventing accidents. Things to Bring: *Boshi Kenkou Techou* (Maternal Handbook)

Inquiries: Hoken Center, ☎Ext.693 8:30AM ~ 5PM (Please call in advance.) Closed on weekends and holidays

もぐもぐ教室 ~離乳食生後7ヶ月以降講座~



### < Baby Food Class for 7 months old and older >

When a baby gets better at swallowing weaning food, it's time to try solid food. Let's learn some easy recipes!

Date & Time: January 25<sup>th</sup>(Thu), 10AM~11:30AM Place: Hoken Center Capacity: First 15 pairs

Eligibility: Babies born between March 16<sup>th</sup> ~ May 31<sup>st</sup>, 2017 & parents \*Sorry, siblings not allowed in class

Details: Tips for mid to later stage of baby food / cooking demonstration & tasting for parents / Lecture & discussion about baby food and parenting (closed Mon, holiday)

Application: from December 18<sup>th</sup>(Mon) 8:30AM, call Hoken Center on weekdays ☎042-555-1111 Ext.625

新しい親医療証の送付

### < Renewal of Single-Parent Medical Support Certificate >

New 親 Single-Parent Medical Support Certificate (purple) will take effect from January 1<sup>st</sup> 2018.

The new card will be mailed to applicable households in the late December. Please return the old certificate (pink) to *Kosodate Shien-ka* by mail or in person. If there are any changes in your registered status as in cases listed below, please report immediately. If you delay to report a change that affects beneficiary eligibility, the office may demand the return of subsidy provided after the status change.

- ① Change of the household member and/or house address.
- ② Change with the medical insurance coverage
- ③ Subsidy beneficiary\* is admitted to a care institution
- ④ Subsidy beneficiary\* is issued with a Medical Support Certificate for Person with Disability
- ⑤ Subsidy beneficiary's\* parent is in state of common-law marriage (de facto marriage)

\*If any of case ③,④,or ⑤ applies, the beneficiary is no longer eligible to this medical support program.

\*You may be ineligible for term which status was not confirmed, therefore asked to return fees.

\*Current beneficiaries who still have not completed the status report must submit the report immediately.

Inquiries: City Hall, *Kosodate Shien-ka Shien-kakari* ☎Ext.236

年末防犯・交通安全・火災予防 パトロール週刊

### < The Year End Crime Prevention, Traffic Safety, Fire Prevention Patrol Week >

In the aim to create a safe town, providing a sense of security for all Hamura City citizens, various groups have planned city-wide patrol by organized efforts of concerned citizens, school workers, members of police and fire department, fire brigades, Hamura City Traffic Safety Committee, Crime Prevention Committee.

Patrol Week: December 21<sup>st</sup> (Thu) ~ 27<sup>th</sup> (Wed) Areas of Patrol: City wide

The patrol week was established to raise awareness for prevention of crime, traffic incidents, or fire in the holiday season of the New Years.

Kick-Off Ceremony: December 21<sup>st</sup> (Thu) Place: JR Ozaku Station *Tamokutekihiroba*, & area near station. Organizations will patrol this area after the ceremony.

Inquiries: *Bousai Anzen Ka, Bouhan Koutsuu Anzen Kakari*, ☎Ext. 216

< The "My Number" News №17 >

~ The Network for Information Sharing Among National and Local Municipal Organizations under the Number System for Tax /Social Security System

The use of the network for sharing information under the Number System for Tax /Social Security System has started on November 13<sup>th</sup>, 2017. The online network allows the various agencies to exchange the resident registry of citizens' data to deal with administrative procedures, and this information-sharing network abiding to rules for privacy policy is used at national and regional agencies and applied to carry out the tasks under the new system. Use of this system will be beneficial by saving time and lessening the number of documents that need to be prepared. (There will be cases in which accompanying documents are necessary for administrative procedures.)

Inquiries:

My Number System for Tax /Social Security System	Tax	National Health Insurance	Disability and Incurable Disease	Elderly Affairs, Nursing Care		Child Rearing		Pregnancy
<i>Soumu Ka, Housei Kakari</i>	<i>Kazei Ka, Shimin Zei Kakari</i>	<i>Shimin Ka, Hoken Kakari</i>	<i>Shougai Fukushi Ka, Shougai Fukushi Div., Shougai Shien kakari</i>	<i>Kourei Fukushi Kaigo Ka, Kaigo Hoken Kakari,</i>	<i>Evaluation for Nursing Care</i>	<i>Kosodate Shien Ka, Shien Kakari</i>	<i>Day Care/Nursery School Kindergarten</i>	<i>Kosodate Soudan Ka, Soudan Kakari</i>
☎Ext. 347	☎Ext. 162	☎Ext. 125	☎Ext. 186	☎Ext. 142	☎Ext. 145	☎235 or 239	☎232	☎Ext. 692

富士見公園クラブハウス 夜間開館のお知らせ

< Timeframe for Rental of The Fujimi Park Club House Has Changed >

Starting in December, the winter season (December ~ March) shortened timeframe for rental of the Fujimi Park Club House will be abolished, and from this December, you can reserve to use the club house until 9PM.

~Please utilize the Conference Rooms ~

There are 2 conference rooms available that can be rented to citizens. The two rooms are part of one large space separated by a removable partition panel, making it possible to expand it into one large room.

Please contact the Club House for more details. The space is rented from 9AM ~ 9PM.

Inquiries: Fujimi Park Club House ☎042-555-4342

新たに避難行動要支援者名簿の登録対象となる方に通知を送付します

ひなんこうどうようしえんしゃせいど

< Hamura City's Evacuation Plan to Support Those Requiring Evacuation Assistance (避難行動要支援者制度) >

There is an evacuation assistance plan activated during a disaster for citizens requiring special consideration such as elderly citizens, physically or mentally challenged citizens, and some foreigners residing in Japan with difficulty to understand Japanese. They will be included in the list of citizens requiring evacuation assistance maintained by Hamura City, which provides a basis for cooperating agencies to be aware of their presence so that they can provide prompt support that these people need.

Please note that this registration system does not guarantee you will receive a special assistance in time of a disaster. It will provide disaster response personnel where the registered help-needing persons are likely to be found by their addresses, but those personnel may not be able to reach them swiftly. It is most recommended for residents to have a friendly relationship with neighborhood people regularly in order to build a network for collecting local information and helping each other.

• Applicable Citizens will Receive Notification •

ひなんこうどうようしえんしゃめいぼ  
(避難行動要支援者名簿)

Those who will be included in the List of Citizens Requiring Evacuation Assistance (避難行動要支援者名簿) will receive a notice in December.

This notice includes information about the Basic Act on Disaster Control Measure, confirmation regarding the information that is kept, and the consent form. This consent form that requests approval for the various agencies to handle the information should be signed and returned. Please send it back to the *Kiki Kanri ka* (Crisis Management) section of Hamura City. There is an envelope for sending the documents back to the City Hall included in the notice. *Kiki Kanri Ka, Kiki Kanri Kakari, Ext. ☎217*

< Consumers' Center >

The Consumers' Center is alerting its citizens not to make dealings with phony sales representatives. Recently, there have been phone calls to some households in which the caller asks for a review of your closet to buy your kimono or expensive jewelry from you. They will pressure you into selling, however, there is a law which protects consumers' rights called the "cooling off" policy. Even though you have released the items, you have the right to reclaim them.

The number of cases such as these has risen from 7200 in 2013 to 8600 in 2016. Elders count for 70% of the victims in these cases. The "cooling off" policy states that you do not have to surrender the items promptly to the buyer even if agreement was reached for the selling of them. It is important that you exercise your rights as a consumer to prevent the sales scams such as these.

Inquiries: Consumers' Center (*Shouhi Seikatsu Center*), ☎Ext. 641.

< Change of Public Service Schedules during Year-End & New-Years Holiday for Public Facilities >

Facilities	Closed Days	Notes
City Hall and City Hall Branch Offices, <i>Suidou Jimusho</i> (Waterworks Office), <i>Shouhi Seikatsu Center</i> , <i>Kyouiku Soudan-shitsu</i> , <i>Hoken Center</i> , <i>Heijitsu Yakan Kyuukan Center</i> (emergency), <i>Chiiki Houkatsu Shien Centers</i> , <i>Yutorogi</i> , Library, <i>Kyoudo Hakubutsukan</i> , Sports Center, Swimming Center, <i>Kyuudou Center</i> , <i>Fujimi Park Club House</i> , Community Center, <i>Sangyou Fukushi</i> Center, <i>Fukushi Center</i> , <i>Ikoi no Sato</i> , Central and West Child Centers, <i>Gakudou Clubs</i> ,	Dec 29 <sup>th</sup> (Fri) ~ Jan 3 <sup>rd</sup> (Wed)	* City Hall: Procedures related to Family Register will be handled at the Guard's Room located by West Entrance (B1 Floor)  * <i>Heijitsu Yakan Kyuukan Center</i> will open its nightly emergency room on January 2 <sup>nd</sup> (Tue), from 5PM to 10PM.  * Swimming Center will operate on an alternate schedule (please refer to specific section for the Swimming Center.)
East Child Center ☎042-570-7751	Dec.28 <sup>th</sup> (Thu)~Jan.4 <sup>th</sup> (Thu)	
<i>Hamura Zoo</i> ☎042-579-4041	January 1 <sup>st</sup> (Mon)	Open every day except Jan. 1 <sup>st</sup> (Mon).
<i>Nousanbutsu Chokubaijo</i> (Farmer's Market)	Dec 31 <sup>st</sup> (Sun)~Jan 5 <sup>th</sup> (Fri)	
Fresh Land <i>Nishitama</i> ☎042-570-2626	Dec 30 <sup>th</sup> (Sat) ~ Jan 1 <sup>st</sup> (Mon)	Bath facility opens from Jan. 2 <sup>nd</sup> (Tue) NOON Gym / meeting rooms will close: Dec 29 <sup>th</sup> (Fri) ~ Jan. 3 <sup>rd</sup> (Wed) Reopens: Jan. 4 <sup>th</sup> (Thu) Other Opening Schedule: Yoga Class - Jan 4 <sup>th</sup> (Thu) Hula Class - Jan. 10 <sup>th</sup> (Wed)
<Funeral Hall> <i>Fujimi Saijou</i> ☎042-555-6269	Jan 1 <sup>st</sup> (Mon) ~ 2 <sup>nd</sup> (Tue) * Ceremony reservations will be accepted by phone.	Funeral service can be held until Dec. 31 <sup>st</sup> (Sun) Services will be available again from Jan. 3 <sup>rd</sup> (Wed)
<Funeral Hall> <i>Mizuho Saijou</i> ☎042-557-0064	Jan 1 <sup>st</sup> (Mon)~3 <sup>rd</sup> (Wed) * Ceremony reservations will be accepted by phone. (8:30AM ~ 8PM)	Funeral service can be held until Dec. 31 <sup>st</sup> (Sun) Services will be available again from Jan. 3 <sup>rd</sup> (Wed) Cremation will be offered until 0:30PM of Dec. 31 <sup>st</sup> (Sun), resumes 09:30 of Jan. 4 <sup>th</sup> (Thu)

医療機関は最後

< Temporary Schedule for the Entire Hamura City >

< Library – Change of Lending Period >

The book lending period will be changed during the Year-End & New-Year Holidays. Please be aware that the Book Posts will not be available for returning the library materials during this period.

\*Magazines for holiday lending will be available from December 24<sup>th</sup> (Sun). Inquiries: Library ☎042-554-2280

< **Temporary Closure of the Public Facility Reservation System** >

Access online to the Reservation system and Reservation status log cannot be made on:

December 28<sup>th</sup> (Thu), 5PM ~ January 4<sup>th</sup> (Thu) 8:40AM

Reservation drawing results for *Yutorogi* and the Sports Center will be announced on:

January 4<sup>th</sup> (Thu) 8:40AM

Please refer to the below contact information regarding your reservation.

Inquiries: *Yutorogi* ☎042-570-0707 Sports Center ☎042-555-0033 Community Center ☎042-554-8584

< **Temporary Suspension of Automated Registry Machine at City Hall and Convenience Stores** >

The service of automated registry machine for Resident's Registry and Personal Seal Registry will not be available from December 29<sup>th</sup> (Fri) to January 3<sup>rd</sup>(Wed). *Shimin-ka Uketsuke-kakari* ☎Ext.122

< **Community Bus "Hamuran" will be running during New Year Holidays** >

The *Hamuran* buses, including *Hamura Higashi* Course will run according to normal operating schedule up until December 29<sup>th</sup> (Thu), however will operate on the holiday schedule for the dates of December 30<sup>th</sup> (Sat) ~ January 3<sup>rd</sup> (Wed). Please use the *Hamuran* buses for your travels during the holiday season.

Inquiries: *Toshi Keikaku Ka, Jyuutaku, Kotsuu Kakari* ☎Ext.276

年末年始のお知らせ(ゴミ) *Oo-Souji* について

< **Cautions for Waste Disposal Towards the End of the Year** >

In Japan, there is an end-of-the-year cleaning custom called "*Oo-Souji*". In this custom, people tend to do extensive house/office cleaning. By the influence of this custom, *Hamura* Recycle Center will see the busiest time of a year in December, and also the city waste collection schedule will be adjusted.

If you are planning to take out oversized trash, please plan ahead and take action at your earliest chance. Also, when you dispose of items of a kind that you rarely take out, please check the disposal rules of them.

そのほかの資源・ごみなどの回収

**DETAILS FOR OTHER CATEGORIES OF YEAR END TRASH COLLECTION**



■ **Spot-Collection : How to dispose of Pet Bottles, White Trays, and Paper Packs** >

December 28<sup>th</sup>(Thu) will be the last day to dispose of this trash before the New Year. The spot-collection container will be closed and locked on December 29<sup>th</sup>(Fri), and will be re-opened on January 4<sup>th</sup>(Thu), after 8AM.

< **How to Dispose of Oversized Trash** > 粗大ごみ

■ **Home Collection by appointment** 自宅回収

Simply call *Sodaigomi Uketsuke* Center and make a pick-up appointment ☎042-570-7733.

Collection requests are accepted until 5PM on December 28<sup>th</sup>(Thu), however, the collection is not guaranteed to happen before the end of year. \*Collection request received on 28<sup>th</sup> will be scheduled after the New Year holidays.

■ **Carry-in Collection** 持ち込み

Recycle Center's final service day of 2017 will be December 28<sup>th</sup> (Thu), open until 4PM.

You may bring the items directly to the Recycle Center. December is a very busy time for oversized trash collection and recycling. Please plan ahead.

The Center will reopen at 9AM, January 4<sup>th</sup> (Thu), 2018. (Facility starts January 8<sup>th</sup> (Sun).)

\*Oversized trash sticker is not required for carry-in collection, however, the handling fee will be charged at Recycle Center Please refer to the manual which was distributed.

\* **What is "Oversized Trash"** In principal, an oversized trash is an item whose longest side measures 50cm or longer. However, smaller items that cannot be processed (crushed) with machinery are also considered oversized trash. Examples of such items are listed on the bottom-half part of *Hamura* Trash Recycling Manual. Some home appliances, such as video players, electric heaters, rice cookers, vacuum cleaners and etc., are often mistaken as oversized trash. These appliances, as well as umbrellas, can be disposed as non-burnable trash.

■ **Excreta Collection** し尿汲取り

The last day for Excreta Collection before New Year is December 26<sup>th</sup>(Tue). If you wish to have this service on the 26<sup>th</sup>, please make an appointment at Excreta Collection Center (☎042-570-7733) by 25<sup>th</sup>(Mon), 3:30PM.

\*Any appointment made later than this time will be served in January, starting on the 5<sup>th</sup>(Fri). Acceptance of appointment resumes January 4<sup>th</sup> (Thu).

Inquiry about waste disposal: City Hall, *Seikatsu Kankyou-ka Seikatsu Kankyou-kakari* ☎Ext.205

## RECYCLABLE WASTE COLLECTION DAYS by CATEGORY

Please be notified that the waste collection schedule will be temporarily modified at the end of the year in some areas in the late December and during the New Year Holidays. Please refer to the below chart and confirm the last day that you are able to dispose of recyclables for 2016 **and** the START of collection for 2017.

We appreciate your cooperation very much. Inquiry: Seikatsu Kankyou-kakari ☎Ext.205

#: Last Day for Collection for December 2017      ♪: First Day of Collection for January 2018

Area	L / F	Recyclables A	Recyclables B	Hard Plastics & Pet Bottles	Metals & Non-combustibles	Toxic waste
Kawasaki, Tamagawa, Seiryuu	#	Dec 27 <sup>th</sup> (Wed)	Dec 26 <sup>th</sup> (Tue)	Dec 22 <sup>nd</sup> (Fri)		Dec 15 <sup>th</sup> (Fri)
	♪	Jan 10 <sup>th</sup> (Wed)	Jan 9 <sup>th</sup> (Tue)	Jan 12 <sup>th</sup> (Fri)	Jan 5 <sup>th</sup> (Fri)	Jan 19 <sup>th</sup> (Fri)
Hane Higashi	#	Dec 27 <sup>th</sup> (Wed)	Dec 22 <sup>nd</sup> (Fri)	Dec 19 <sup>th</sup> (Tue)	Dec 26 <sup>th</sup> (Tue)	
	♪	Jan 10 <sup>th</sup> (Wed)	Jan 5 <sup>th</sup> (Fri)	Jan 16 <sup>th</sup> (Tue)	Jan 23 <sup>rd</sup> (Tue)	Jan 9 <sup>th</sup> (Tue)
Hane Naka(*)	#	Dec 26 <sup>th</sup> (Tue)	Dec 22 <sup>nd</sup> (Fri)	Dec 20 <sup>th</sup> (Wed)	Dec 27 <sup>th</sup> (Wed)	
	♪	Jan 9 <sup>th</sup> (Tue)	Jan 5 <sup>th</sup> (Fri)	Jan 10 <sup>th</sup> (Wed)	Jan 31 <sup>st</sup> (Wed)	Jan 17 <sup>th</sup> (Wed)
Hanekami, Hane Nishi	#	Dec 27 <sup>th</sup> (Wed)	Dec 26 <sup>th</sup> (Tue)	Dec 22 <sup>nd</sup> (Fri)	Dec 15 <sup>th</sup> (Fri)	
	♪	Jan 10 <sup>th</sup> (Wed)	Jan 9 <sup>th</sup> (Tue)	Jan 12 <sup>th</sup> (Fri)	Jan 19 <sup>th</sup> (Fri)	Jan 5 <sup>th</sup> (Fri)
Ozakudai(*)	#	Dec 26 <sup>th</sup> (Tue)	Dec 22 <sup>nd</sup> (Fri)	Dec 20 <sup>th</sup> (Wed)		Dec 27 <sup>th</sup> (Wed)
	♪	Jan 9 <sup>th</sup> (Tue)	Jan 5 <sup>th</sup> (Fri)	Jan 10 <sup>th</sup> (Wed)	Jan 17 <sup>th</sup> (Wed)	Jan 31 <sup>st</sup> (Wed)
Shinmeidai 1 & 2(*)	#	Dec 22 <sup>nd</sup> (Fri)	Dec 27 <sup>th</sup> (Wed)	Dec 26 <sup>th</sup> (Tue)		Dec 19 <sup>th</sup> (Tue)
	♪	Jan 5 <sup>th</sup> (Fri)	Jan 10 <sup>th</sup> (Wed)	Jan 16 <sup>th</sup> (Tue)	Jan 9 <sup>th</sup> (Tue)	Jan 23 <sup>rd</sup> (Tue)
Shinmeidai 3 & 4	#	Dec 25 <sup>th</sup> (Mon)	Dec 27 <sup>th</sup> (Wed)	Dec 21 <sup>st</sup> (Thu)	Dec 28 <sup>th</sup> (Thu)	
	♪	Jan 8 <sup>th</sup> (Mon)	Jan 10 <sup>th</sup> (Wed)	Jan 4 <sup>th</sup> (Thu)	Jan 25 <sup>th</sup> (Thu)	Jan 11 <sup>th</sup> (Thu)
Futaba-chou, Midorigaoka 3, Hane Musashino, Gonokami Musashino, Kawasaki Musashino	#	Dec 27 <sup>th</sup> (Wed)	Dec 25 <sup>th</sup> (Mon)	Dec 28 <sup>th</sup> (Thu)		Dec 21 <sup>st</sup> (Thu)
	♪	Jan 10 <sup>th</sup> (Wed)	Jan 8 <sup>th</sup> (Mon)	Jan 11 <sup>th</sup> (Thu)	Jan 4 <sup>th</sup> (Thu)	Jan 18 <sup>th</sup> (Thu)
Fujimidaira	#	Dec 28 <sup>th</sup> (Thu)	Dec 27 <sup>th</sup> (Wed)	Dec 18 <sup>th</sup> (Mon)	Dec 25 <sup>th</sup> (Mon)	
	♪	Jan 4 <sup>th</sup> (Thu)	Jan 10 <sup>th</sup> (Wed)	Jan 15 <sup>th</sup> (Mon)	Jan 22 <sup>nd</sup> (Mon)	Jan 8 <sup>th</sup> (Mon)
Gonokami	#	Dec 27 <sup>th</sup> (Wed)	Dec 28 <sup>th</sup> (Thu)	Dec 18 <sup>th</sup> (Mon)		Dec 25 <sup>th</sup> (Mon)
	♪	Jan 10 <sup>th</sup> (Wed)	Jan 4 <sup>th</sup> (Thu)	Jan 15 <sup>th</sup> (Mon)	Jan 8 <sup>th</sup> (Mon)	Jan 22 <sup>nd</sup> (Mon)
Midorigaoka 1, 2, 4 & 5(*)	#	Dec 25 <sup>th</sup> (Mon)	Dec 28 <sup>th</sup> (Thu)	Dec 27 <sup>th</sup> (Wed)		Dec 20 <sup>th</sup> (Wed)
	♪	Jan 8 <sup>th</sup> (Mon)	Jan 4 <sup>th</sup> (Thu)	Jan 17 <sup>th</sup> (Wed)	Jan 10 <sup>th</sup> (Wed)	Jan 24 <sup>th</sup> (Wed)
Sakae-chou(*)	#	Dec 28 <sup>th</sup> (Thu)	Dec 25 <sup>th</sup> (Mon)	Dec 27 <sup>th</sup> (Wed)	Dec 20 <sup>th</sup> (Wed)	
	♪	Jan 4 <sup>th</sup> (Thu)	Jan 8 <sup>th</sup> (Mon)	Jan 17 <sup>th</sup> (Wed)	Jan 24 <sup>th</sup> (Wed)	Jan 10 <sup>th</sup> (Wed)

< **Tips for waste disposal** > ○ Please be sure to take out waste **by 8AM**.

○ Temporary collecting hours are different from regular routine collecting hours for plastics and combustibles.

-- Last collection day for Plastic Containers(プラ): December 29<sup>th</sup> (Fri). \*No cans and bottles collected on this day. Wednesday (Tuesday for Shinmeidai 1 & 2) collection in January 2018 for these (\*)districts will be made on an irregular week; please check the schedule.

-- At Kawasaki, Tamagawa, Seiryuu Hane Higashi Hane Naka Hanekami, Hane Nishi Ozakudai Shinmeidai 1 & 2: Last collection day for Combustibles(燃やせるごみ) is December 30<sup>th</sup>, (Sat) ~ Resumes Jan. 4<sup>th</sup>, (Thu) 2018

-- At Shinmeidai 3 & 4 Futaba-chou, Midorigaoka 3, Hane Musashino, Gonokami Musashino, Kawasaki Musashino Fujimidaira Gonokami Midorigaoka 1, 2, 4 & 5 Sakae-chou:

Last collection day for Combustibles(燃やせるごみ) is December 30<sup>th</sup>, (Sat) ~ Resumes Jan. 5<sup>th</sup>, (Fri) 2018

**RADIATION LEVEL ANALYSIS for HAMURA CITY AIR**

The results of the Radiation level analysis conducted in Hamura City in October 2017 were released.

Inquiry: Kankyō Hozen-ka Kankyō Hozen-kakari ☎Ext.226

**Level of Radiation in the Air(unit:  $\mu\text{sv/h}$ ) of  
Municipal Schools/Children's Facilities of Hamura**

Point of Analysis	Elevation Above Ground at Analysis Point		
	5 cm	50 cm	1m
October 6 <sup>th</sup> (Fri)			
Azuma Gakudo Club	0.064	0.067	0.066
Naka Gakudo Club (Chuo Jidokan)	0.071	0.065	0.064
Fujimi Gakudo Club	0.064	0.064	0.065
Sakae Gakudo Club	0.052	0.052	0.051
Shorin Gakudo Club	0.074	0.066	0.068
Ozakudai Daini Gakudo Club	0.085	0.084	0.083
Musashino Gakudo Club (Higashi Jidokan)	0.090	0.079	0.087
Musashino Daini Gakudo Club	0.090	0.088	0.089
October 10 <sup>th</sup> (Tue)			
Ozakudai Gakudo Club (Nishi Jidokan)	0.074	0.077	0.079
Nishi Gakudo Club	0.067	0.067	0.061
October 30 <sup>th</sup> (Mon)			
Hamura Higashi Elem School	0.043	0.042	0.043
Hamura Nishi Elem School	0.043	0.043	0.044
Fujimi Elementary	0.051	0.054	0.051
Sakae Elementary	0.059	0.064	0.058
Shorin Elementary	0.052	0.049	0.050
Ozakudai Elementary	0.044	0.045	0.050
Musashino Elementary	0.053	0.056	0.054
Hamura Daiichi Jr High School	0.050	0.048	0.048
Hamura Daini Jr High School	0.049	0.045	0.048
Hamura Daisan Jr High School	0.048	0.049	0.050

**Level of Radiation in the Air(unit:  $\mu\text{sv/h}$ ) of  
Fujimi Park**

Date of Analysis	Elevation Above Ground at Analysis Point		
	5 cm	50 cm	1m
October 11 <sup>th</sup> (Wed)	0.054	0.052	0.054

**Level of Radiation in the Air(unit:  $\mu\text{sv/h}$ ) for  
Location of Higher Altitude**

Point of Analysis	Elevation Above Ground at Analysis Point		
	5 cm	50 cm	1m
October 2 <sup>nd</sup> (Mon)			
Kawasaki Park	0.073	0.073	0.067
Maruyama Shita Jidou Kouen	0.061	0.062	0.056
Shinmei Higashi Jidou Kouen	0.059	0.061	0.058
Asahi Kouen	0.036	0.040	0.040
Musashino Kouen	0.051	0.048	0.044
Donguri Yama Jidou Kouen	0.055	0.056	0.053
Pelican Jidou Kouen	0.043	0.046	0.047
Asahigaoka Kouen	0.068	0.066	0.062
Akebono Sugi Jidou Kouen	0.070	0.075	0.070
Green Trim Kouen	0.053	0.053	0.050
Keyaki Jidou Kouen	0.064	0.061	0.061
Shirakaba Jidou Kouen	0.072	0.071	0.064

**Radiation Level Analysis of Tap Water of Hamura City**

The target value is figures specified by the government at which findings should be lower than (the sum of the level detected for cesium 134 and cesium 137).

Waterworks Office ☎042-554-2269

Date the Water Sample was Gained	Testing Items(unit: Becquerel per kilogram)	
	radioactive cesium 134	radioactive cesium 137
Oct. 7 <sup>th</sup> (Tue) 11AM	Not detected(Below 0.1)	Not detected(Below 0.2)
Target value	10	

< **The Second Term for Free Screening for Stomach / Lung Cancer & Tuberculosis** >

Date & Time: Designated dates in February 8<sup>th</sup> (Thu) ~ 10<sup>th</sup> (Sat) Time: 7:30AM ~ Noon

Place: Hoken Center Fee: Free Eligibility: Hamura residents 40 years of age and older

\*You are not eligible to take this exam if any of the following conditions apply:

- ① Pregnant, or possibility of pregnancy
- ② Currently being treated for stomach or lung illness
- ③ Those who have the same cancer screening opportunity provided by the employer
- ④ If you have taken this screening already offered by Hamura City.

Capacity: 100 people per day (If applicants exceed capacity, selection will be done by name drawing and you will be either notified of your drawing result or receive a screening coupon around Jan. 26<sup>th</sup> (Fri). Fee: Free

Examination Details: Stomach / Lung examination (certain conditions apply to Sputum examination)

Application Period: December 18<sup>th</sup> (Mon) ~ January 22<sup>nd</sup> (Mon) postmark stamp deadline

How to apply: ① Fill in necessary information on an application form and turn it in at Hoken Center on weekdays, or ② Paste the form on a post card and send it to Hoken Center.

\*Application form is available at Hoken Center, city hall 1st floor, city hall branch offices, and on the city website Inquiries: Hoken Center 042-555-1111, ☎Ext. 623

- You may apply for all the screening/exams held on the same day.
- Those who are taking Stomach Cancer screening cannot eat or drink after 9PM in the previous night.
- Sputum examination is provided only for people with the following conditions:  
Smoker who has smoked (number of cigarettes per day) x (total smoking years) = 400 or more.

– How to fill in an application postcard –

Front	Back
〒205-0003	•Your name, date of birth, mailing address, and phone number
To: "Gan Kenshin Tantou"	•Your desired screening date (first and second choices)
Hamurashi Hoken Center	•Screening/Exam you desire:
5-5-2 Midorigaoka	•Whether you wish to have sputum examination: Yes or No
Hamura City	* If yes, please state the reason:

Please Note: Each individual must apply separately even if they are in the same household.

< **National Health Insurance Medical Expense Report** >

If you have received medical service in September and/or received physical therapy from a judo healing practitioner in September, and the total medical fee in those months was more than ¥3000, you will receive National Health Insurance (NHI) Medical Expense Report (国民健康保険医療費通知) by mail.

It is a letter from municipal government to NHI members which notifies his/her record of received medical services (only the services applicable to NHI coverage), with the list of original medical service fees at 100% (amount before the insurance coverage was applied).

This report is issued in purpose of promoting the understanding of NHI coverage system as well as the awareness of health management importance. There is no required procedure to be done concerning this report. Inquiries: City Hall, *Shimin-ka Hoken-kakari* ☎Ext.129

< **The Hamusupo Open Ping Pong Tournament** >

Let's enjoy ping pong at the Hamusupo Open Ping Pong Tournament! This will be a tournament for doubles, for teams consisting of three (one female, 2 males). Prizes will be given, too

Date: December 11<sup>th</sup> (Sun), 9AM ~ Place: Sports Center Hall #2 Capacity: First 100 Applicants

Fee: High School Students and younger /Members ¥200, Others ¥300, College and Older/ members ¥400, Others: ¥800 Fee will be collected when you submit application.

Apply between Dec. 19<sup>th</sup> (Tue) ~ Jan. 19<sup>th</sup> (Fri) (excluding weekends & Mon.), directly to the counter of *Hamusupo* at the Sports Center on Tuesdays ~ Friday: 1PM ~ 4PM

Inquiries: *Hamusupo* Office ☎042-519-5712 or Representative Kato ☎090-6985-9672



**SWIMMING CENTER ☎042-579-3210**

**< Year-end & New Year Holiday Schedule >**

\*Pool, Sports Sauna: will open until December 24<sup>th</sup>(Sun)

\*Training room: until December 28<sup>th</sup>(Thu)

→ Both facilities resume on Jan 4<sup>th</sup> (Wed).

Swimming Center will be entirely closed from December 29<sup>th</sup> (Fri) to Jan. 3<sup>rd</sup> (Wed).

アクアビクス

**< Aquabics (In-Water Aerobics) January ~ March Schedule >**

Can't swim? Don't worry. Let's have fun exercising in the water!

Date & Time: Every Thursday between January 11<sup>th</sup> (Thu) and March 29<sup>th</sup> (Thu), 3PM~3:50PM

Eligibility: Anyone who is 16 years old and older      Capacity: First 35 people

Fee: Hamura residents & workers ¥400, Others ¥600 (Insurance & admission fee are included)

Items to bring: Swimsuit, swimming cap, and towel      Instructor: Hamura-shi Taiiku Kyoukai Sports Trainer

How to attend: Please come to Swimming Pool Front Desk between 1:50PM ~ 2:50PM on the class day.

**< AZEMS (All Zero Emission Mobile System) >**

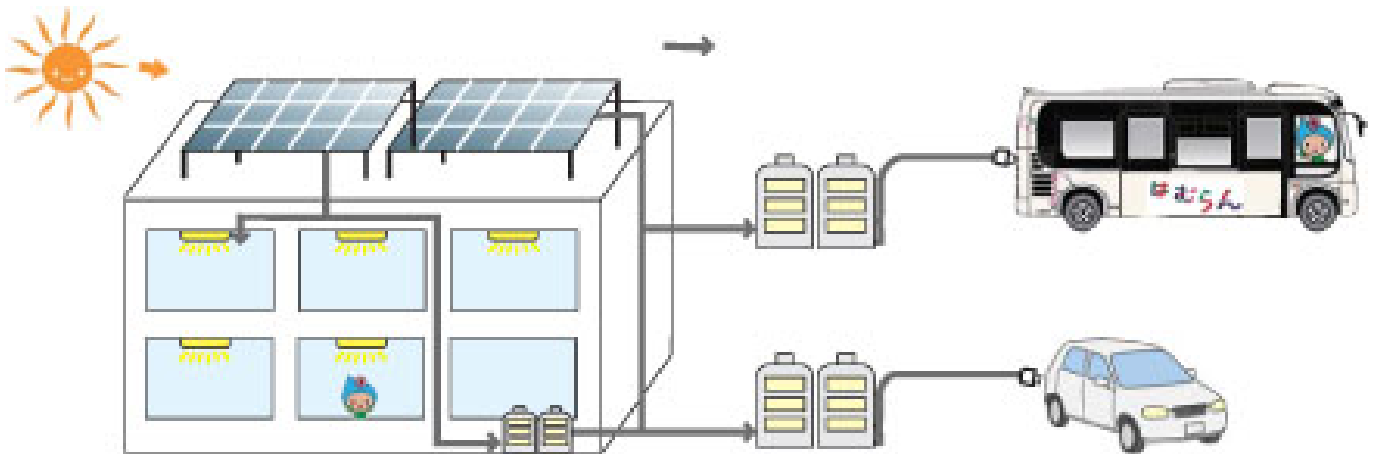
The AZEMS Project is part of Hamura City's effort to save the earth's natural environment.

The name of AZEMS project is derived from the first letter of each word in the name. The solar panel installed on the city hall rooftop creates energy as a renewable energy resource which the community bus "Hamuran" gains its power from. The community bus is a mobile system with "zero" harmful gas emission.

A car usually runs on gasoline, resulting in the generation of harmful gasses being released into the air. The air pollution caused by these gasses contribute to global warming.

An alternative to this energy gained from the burning of fossil fuels is solar power. The solar powered energy generated in the AZEMS System is used as an energy source that does not pollute the environment. There is no emission of carbon dioxide, so it does not pollute the air. The solar panel, which is installed on the roof of the city hall building absorbs the rays of the sun and converts light to usable energy. This system also provides electricity for the city hall building. Next to the energy charging station that the Hamuran bus uses, there is a charging station open to use by citizens who own electric vehicles.

The rooftop solar panel operates as shown in the picture below:



Inquiries: Kankyou Hozen Ka, Kankyou Hozen Kakari ☎Ext. 225

< Handcraft Workshop ~ "Ohinasama" Girl's Day Dolls ~ >

Date & Time: Jan. 31<sup>st</sup> (Wed) & Feb. 7<sup>th</sup> (Wed) (total of 2 classes), 10AM ~ 3PM Place: Silver Jinzai Center

Capacity: First 20 applicants Things to bring: Sewing kit (if you own one), and lunch

Fee: ¥2000 (material cost) How to apply & Inquiry: Call or visit the Center before January 25<sup>th</sup> (Thu).

The Silver Jinzai Center is closed on weekends. Hours are from 8:30AM ~ 5PM.

HAMURA ZOO ☎042-579-4041

The mommy meerkat has had her litter of 4 babies! These babies were born to "Sudachi" and "Amanatsu". They can eat whole foods now, and they come out of the cage when it is sunny and warm.

Please come to meet them!



◆ MEDICAL FACILITIES open on SUNDAYS & HOLIDAYS ◆  
DECEMBER 17<sup>th</sup> (Sun) ~ JANUARY 3<sup>rd</sup> (Wed)

DATE	HOSPITAL				DENTAL CLINIC	
	9am~5pm		5pm~10pm		9am~5pm	
December 17 <sup>th</sup> (Sun)	<i>Ozaku Ekimae Clinic</i>	☎042-578-0161	<i>Fussa-shi Hoken Center</i>	☎042-552-0099	<i>Uno Shika lin</i>	☎042-555-8241
23 <sup>rd</sup> (Sat)	<i>Yamaguchi Naika Clinic</i>	☎042-570-7661	<i>Mizuho Clinic (Mizuho-machi)</i>	☎042-568-0300	<i>Okikura Shika</i>	☎042-555-4331
24 <sup>th</sup> (Sun)	<i>Ozaki Clinic</i>	☎042-554-0188	<i>Fussa-shi Hoken Center</i>	☎042-552-0099	<i>Ozawa Shika Clinic</i>	☎042-579-1500
29 <sup>th</sup> (Fri)	<i>Shinmeidai Clinic</i>	☎042-554-7370	<i>Takamizu lin (Mizuho-machi)</i>	☎042-557-0028	<i>Nozaki Shika Clinic</i>	☎042-555-3316
30 <sup>th</sup> (Sat)	<i>Yokota Clinic</i>	☎042-554-8580	<i>Hikari Clinic (Fussa-shi)</i>	☎042-530-0221	<i>Masuda Shika lin</i>	☎042-551-8686
31 <sup>st</sup> (Sun)	<i>Baba Kodomo Clinic</i>	☎042-555-3788	<i>Yamaguchi Geka lin (Fussa-shi)</i>	☎042-553-1177	<i>Minagawa Sougou Shika Clinic</i>	☎042-555-8219
January 1 <sup>st</sup> (Mon)	<i>Izumi Clinic</i>	☎042-555-8018	<i>Mizuho Clinic (Mizuho-machi)</i>	☎042-568-0300	<i>Hamura Station Dental Clinic</i>	☎042-570-5621
2 <sup>nd</sup> (Tue)	<i>Yanagida lin</i>	☎042-555-1800	<i>Heijitsu Yakan Kyuukan Center</i>	☎042-555-9999	<i>Yano Shika lin</i>	☎042-555-3363
3 <sup>rd</sup> (Wed)	<i>Matsubara Naika lin</i>	☎042-554-2427	<i>Hikari Clinic (Fussa-shi)</i>	☎042-530-0221	<i>Heizou Shika lin</i>	☎042-554-0066

For more information, call City Hall 042-555-1111 ☎Ext. 623

Please note that the above information is subject to change without notice.

\*Tokyo Health & Medical Information Center "Himawari" Japanese ☎03-5272-0303 (24 Hours)  
Foreign Language Service ☎03-5285-8181 (English) 9AM~8PM Daily,  
Emergency Purpose Translation (for emergency only): ☎03-5285-8185 on weekdays 5PM ~8PM,  
weekends and holidays 9AM ~ 8PM. Languages: English, Chinese, Korean, Thai, Spanish

(東京都ウェブサイトより) <https://www.himawari.metro.tokyo.jp/qq/qq13enmnl.asp>